

Alaskan Way Viaduct **REPLACEMENT** PROGRAM



January 2014



South Atlantic Street overpass to open this month

In January 2014, the Washington State Department of Transportation will open a new overpass at the south end of downtown Seattle. Stretching above State Route 99 to the west of the stadiums, the overpass will allow traffic to bypass a busy railroad track that crosses South Atlantic Street near the entrance to the Port of Seattle's busiest freight terminal. That's good news for anyone who uses East Marginal Way South/Alaskan Way South to travel through SODO, and especially good news for the freight haulers who make frequent trips to and from the terminal.

In addition to the new overpass, the project is building a new section of permanent bicycle and pedestrian path to the west of SR 99. Scheduled to open in winter 2014, this new section will complete the path between Atlantic and South King Street, and provide bicyclists and pedestrians safe access between SODO and downtown neighborhoods.

For more information

Visit the website at:
www.AlaskanWayViaduct.org

Call the hotline:
1-888-AWV-LINE

Send an email to:
viaduct@wsdot.wa.gov

Send a letter to:
Alaskan Way Viaduct
Replacement Program
c/o Washington State
Department of Transportation
999 Third Ave., Suite 2200
Seattle, WA 98104

Follow
[@BerthaDigsSR99](https://twitter.com/BerthaDigsSR99)



The South Atlantic Street overpass is one of more than 20 projects that are working together to replace the Alaskan Way Viaduct and reshape the SR 99 corridor. This rendering depicts the overpass after the SR 99 tunnel is open to traffic.

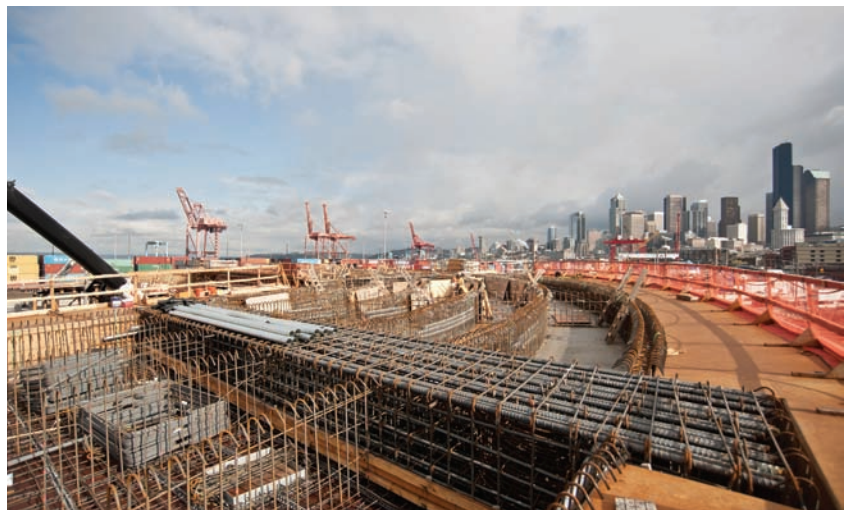
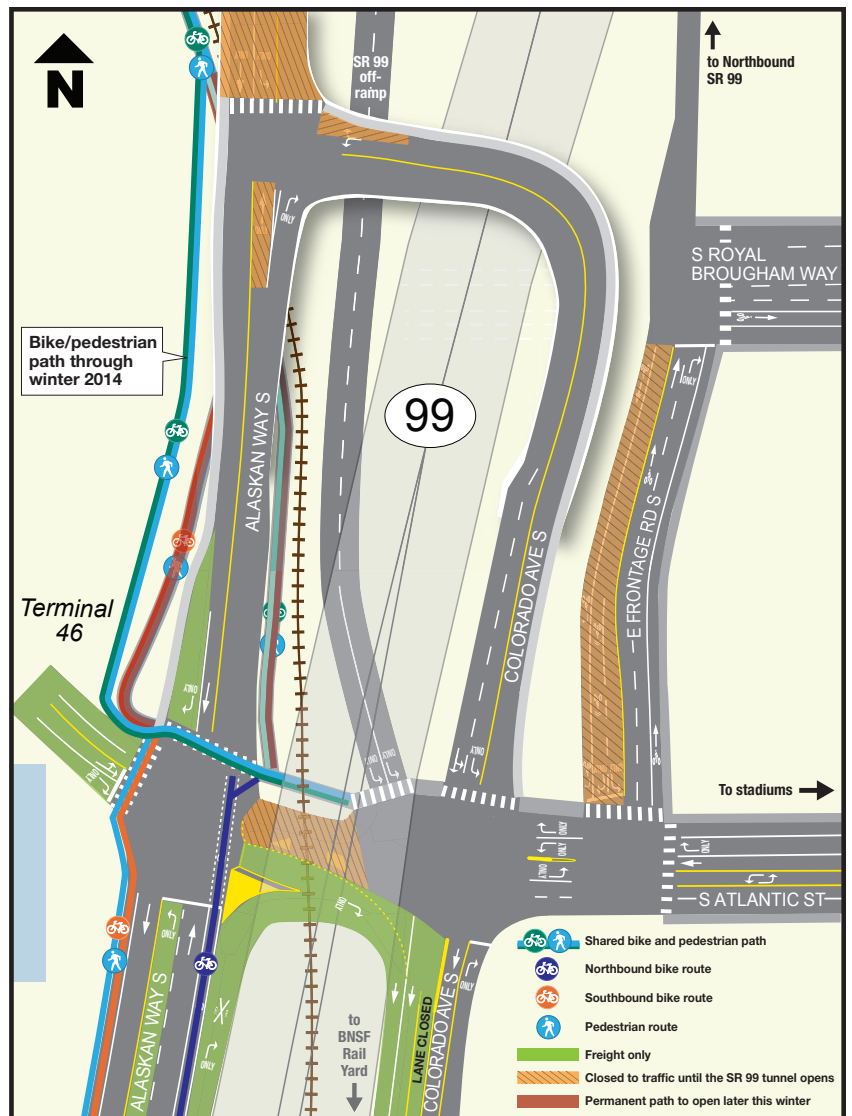
Getting around

- Drivers will use the new overpass to bypass the busy railroad track that crosses South Atlantic Street. The surface street rail crossing on Atlantic will be closed to through traffic.
- Bicyclists and pedestrians traveling east or west can use the sidewalk on the north side of Atlantic or use the overpass when a train blocks the tracks.
- Truckers can use new freight-only lanes on Alaskan Way and Atlantic to get to the new north entrance to the rail yard on Colorado Avenue South.

Future changes

When the SR 99 tunnel opens:

- The surface-street rail crossing on Atlantic will reopen.
- The temporary southbound SR 99 off-ramp to Atlantic will be removed.
- The north leg of the overpass will reopen as part of the new Alaskan Way South, connecting drivers to Pioneer Square and the waterfront.



Americans with Disabilities Act (ADA) Information: This material can be made available in an alternate format by emailing the WSDOT Diversity/ADA Compliance Team at wsdotada@wsdot.wa.gov or by calling toll free, 855-362-4ADA (4232). Persons who are deaf or hard of hearing may make a request by calling the Washington State Relay at 711.

Title VI: WSDOT ensures full compliance with Title VI of the Civil Rights Act of 1964 by prohibiting discrimination against any person on the basis of race, color, national origin or sex in the provision of benefits and services resulting from its federally assisted programs and activities. For questions regarding WSDOT's Title VI Program, contact Jonté Sulton at 360-705-7082 or SultonJ@wsdot.wa.gov.