



Lower Spokane St to be Repaved Update for Work Scheduled for Week of September 19, 2016

The Seattle Department of Transportation (SDOT) is continuing with work started August 8, 2016 to repave, reconstruct sidewalks and curb ramps, and make other improvements along SW Spokane Street from SW Klickitat Way to East Marginal Way S to improve safety for all users. Construction is expected to last approximately 3 months. See details below for work scheduled over the next two weeks.

WORK PLANNED FOR THE WEEK OF SEPTEMBER 19, 2016

(See map for detail – highlighted in orange)

- SW Klickitat Way and Manning Street
 - Forming and pouring new curb ramps and replacement portions of sidewalk on outer edges of roadway
 - Sidewalk and ramp construction at the entrance to Harbor Marina Corporate Center off Klickitat Way
- SW Spokane St and Manning St
 - Constructing the second half of a raised crosswalk in the West Seattle Bridge Trail across the driveway on the north side of Spokane St at Manning St
 - Demo of existing pavement and removal of abandoned RR tracks on south side of Spokane St at Manning St
- Project Wide
 - Asphalt overlay on portions of Spokane St and Klickitat Way, Friday 9/23 through Sunday 9/25.

WHAT TO EXPECT DURING CONSTRUCTION FOR THE WEEK OF SEPTEMBER 19, 2016

- Weekday work hours from 9 AM to 4 PM
- Single lane closures and/or lane width reductions during work hours
- Noise, dust and vibration typical of construction
- Access to the port and businesses will be maintained
- Temporary detour for peds traveling east-west on Spokane St, crossing closed at Spokane St/11th Ave must use West Seattle Bike Trail
- Temporary ped/bike pathway around work zone on north side of Spokane St at Manning St
- Weekend detours for asphalt overlay

WORK PLANNED FOR THE WEEK OF SEPTEMBER 26, 2016

(See map for detail – highlighted in yellow)

- SW Spokane St
 - Full depth pavement replacement in Spokane St between 11th Ave and Manning St
 - Additional pavement grinding on Spokane St
- Spokane St at Manning St
 - Continued construction of the second half of a raised crosswalk in the West Seattle Bridge Trail across the driveway on the north side of Spokane St at Manning St

PLEASE NOTE THAT WORK PLANNED IS SUBJECT TO CHANGE

This project is funded by the 9-year Levy to Move Seattle, approved by voters in 2015. Learn more about the levy at www.seattle.gov/LevytoMoveSeattle.

PROJECT INFORMATION & CONTACT

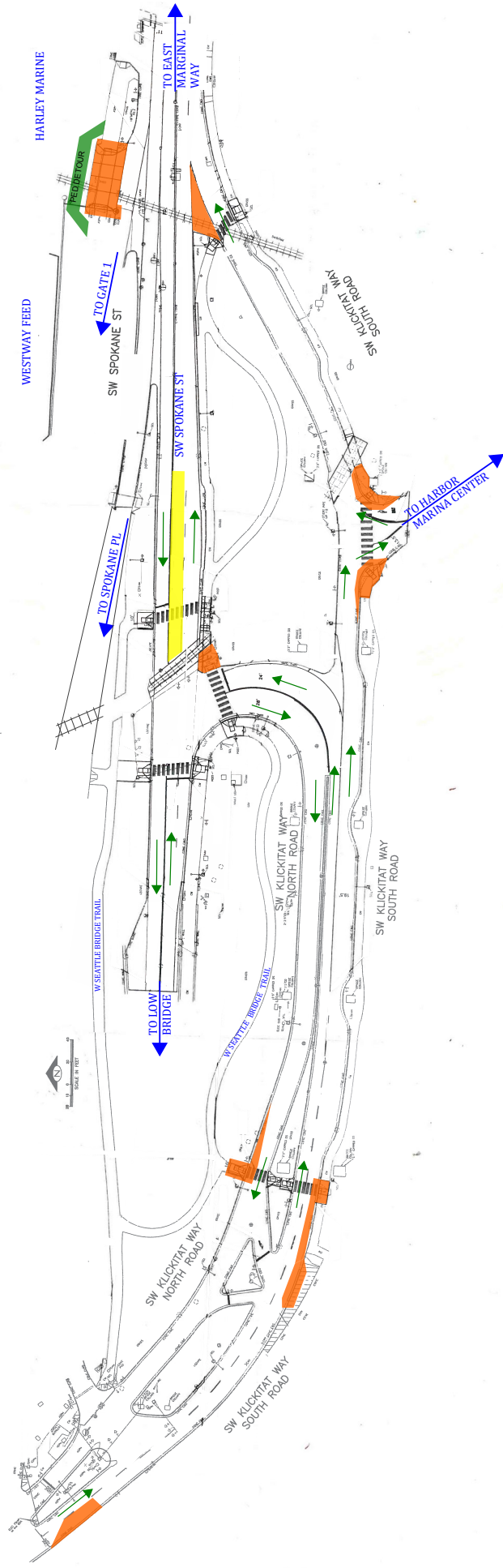
www.seattle.gov.transportation/pave_spokane.htm
 Paul Elliott, (206) 684-5321 or paul.elliott@seattle.gov
 If you need this information translated, please call (206) 684-5321.



Seattle
 Department of
 Transportation



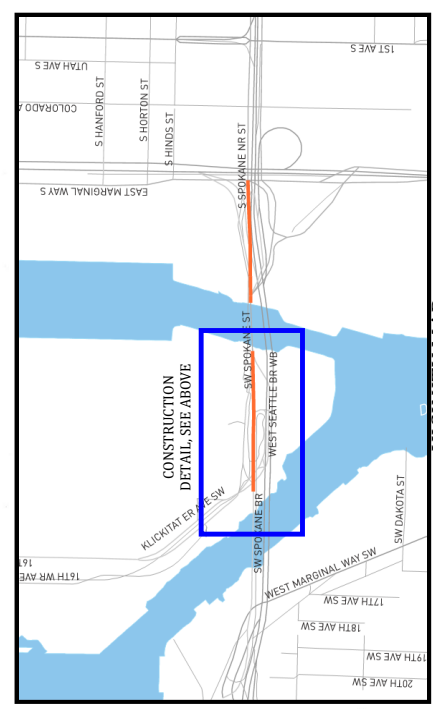
SPOKANE ST AAC TWO WEEK CONSTRUCTION LOOK AHEAD MAP



*** ASPHALT OVERLAY NOT SHOWN FOR CLARITY, WILL TAKE PLACE ON MULTIPLE ROADWAYS DURING WEEKEND OF SEPTEMBER 23RD - 25TH ***

LEGEND

	CONSTRUCTION ZONE (9/19-9/25)
	CONSTRUCTION ZONE (9/26-10/2)



VICINITY MAP