



# CONSTRUCTION NOTICE

February 14, 2022 | SEWER REHABILITATION IN YOUR NEIGHBORHOOD

## PROJECT DESCRIPTION

Seattle Public Utilities (SPU) is making repairs to a sewer line located in your area as part of a citywide sewer rehabilitation effort. This work enables SPU to provide reliable service to our customers.

## LOCATION

Work will occur on 8th Ave SW between SW Cambridge St and SW Roxbury St. See map for approximate work location.

## SCHEDULE

Construction is expected to begin as early as February 21. We expect repair work to take up to three weeks to complete. Construction activities will occur weekdays, 7 am to 4 pm. Note that the start date, duration and working hours are subject to change due to permitting, weather, crew availability, and other factors.

## ANTICIPATED IMPACTS

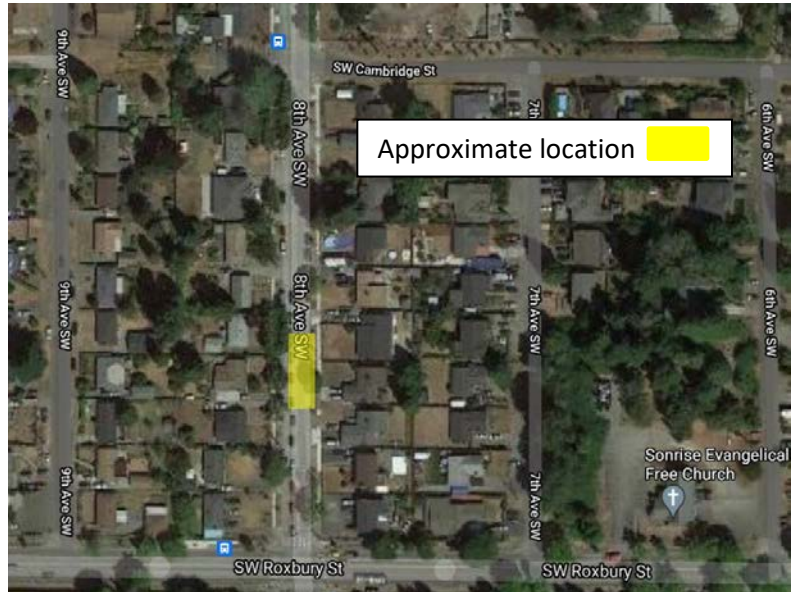
Residents and businesses will continue to receive normal sewer services during construction. However, you can also expect:

- Construction noise, dirt, vibrations, and pavement excavation and removal.
- Increased construction traffic and staging of large equipment and barriers in the area.
- Temporary lane closures and parking restrictions.
- Crews will coordinate with residents needing local driveway access. Residents will have access to their homes.
- Contractor crews will coordinate garbage/recycling/compost pick-up, mail delivery, and emergency access, if needed.
- Residents next to the repair may be asked to limit water usage. Contractor crews will provide notification when performing work that will require reduced flow.
- Once work is complete, the contractor will return to perform permanent restoration.

## FOR MORE INFORMATION, CONTACT:

Christina Kapoi, Project Manager, at (206) 775-4138 or [christina.kapoi@seattle.gov](mailto:christina.kapoi@seattle.gov).  
Edgar Gonzalez, Civil Engineer, at (206) 348-4560 or [edgar.gonzalez@seattle.gov](mailto:edgar.gonzalez@seattle.gov).

**Construction Safety is Everyone's Job**, check out some top safety tips at:  
[www.seattle.gov/utilities/constructionsafety](http://www.seattle.gov/utilities/constructionsafety)



Seattle Public Utilities provides essential services — pure mountain drinking water, recycling and composting that lead the nation, and sewer and drainage systems to protect our local waterways — that safeguard your health and our shared environment and help keep Seattle the best place to live.